

Workshop on facilitating JCM implementation in
ASIA –Pacific,
On 28 February to 1 March 2017,
Tokyo, Japan

JCM Project Preparation in Laos

*Present by Immala Inthaboualy,
Director of GHG Inventory & Mitigation Division, DDMCC, MONRE*

Outline

- ❖ Overview of JCM-REDD+
- ❖ JCM REDD+ Model Project preparation
- ❖ JCM Demonstration Project: Lao Energy Efficient Datacenter Project (LEED)

Overview

REDD+
Lao PDR



- ❖ The Government of Lao PDR (GOL) and the Japan International Cooperation Agency (JICA) jointly implemented “*the Participatory Land and Forest Management Project for Reducing Deforestation in Lao PDR*” Since 2004 to 2009 and
- ❖ The project is continue August 2009-August 2014, After an evaluation in 2014 and Project is continuing ..



REDD+ Project Feasibility study by Japan
Government 



Objective of project

- ❖ The overall objective, which is to be achieved the system of REDD (reducing emissions from deforestation and forest degradation) in the northern part of Laos
- ❖ To develop the REDD system is expected to contribute to both reducing deforestation and forest degradation, and improving livelihoods
- ❖ To developed the Community Support Programme Tool (CSPT) to provide alternative livelihoods in order to stabilize shifting cultivation
- ❖ Implements some demonstration activities against deforestation and forest degradation by participatory approach

REDD+Study: Participatory Land and Forest Management Project for Reducing Deforestation in Lao PDR



The project covers two target areas 2:

➤ Participatory Land and Forest Management Project for Reducing Deforestation in Lao P.D.R. (PAREDD)

➤ The Forest Management and Community Support Project (FORCOM)

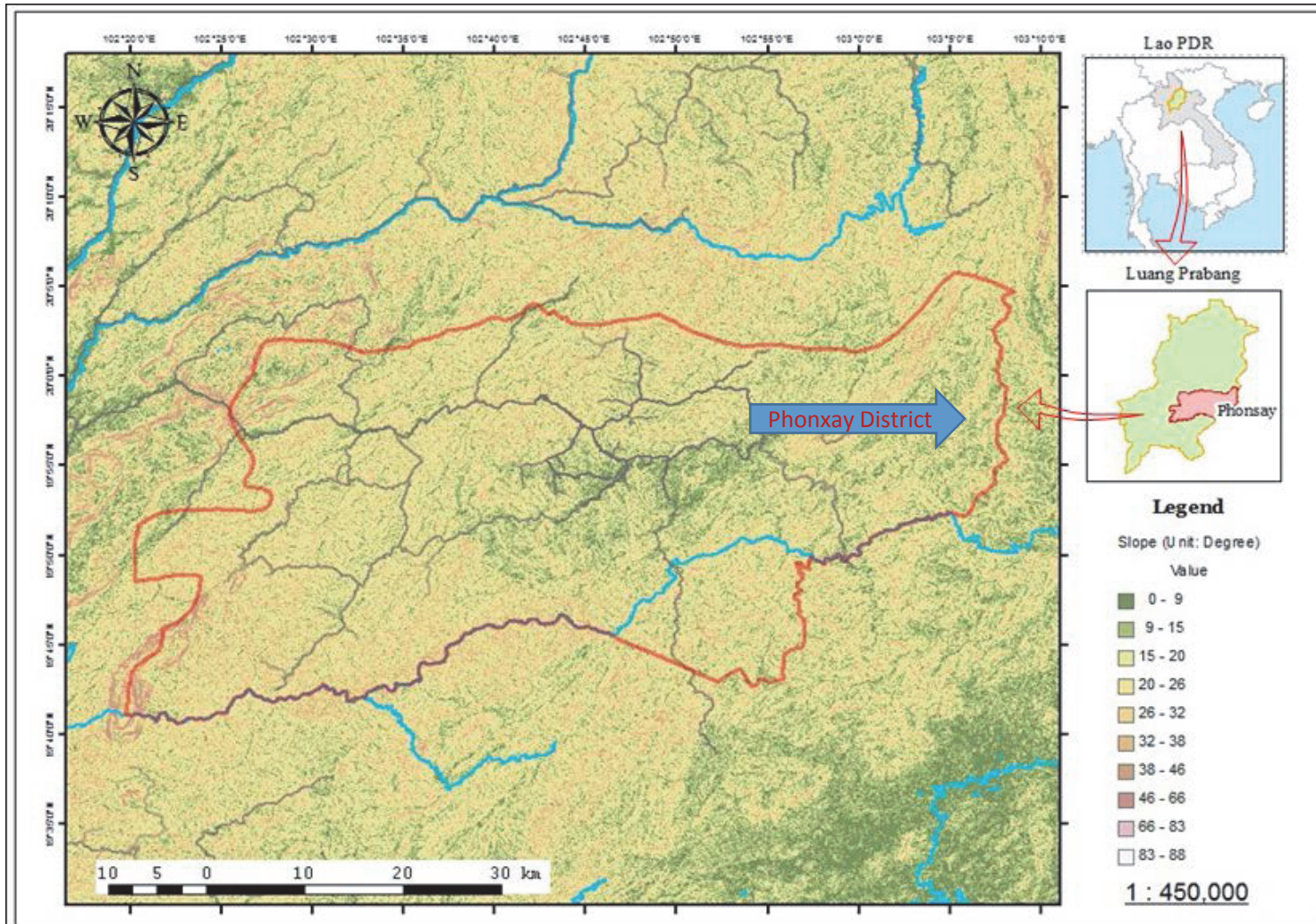
1) PAREDD The project is selecting appropriate PAREDD sites in Luang Prabang province based on a forest cover change map and statistics.

2) FORCOM sites: These are located in 9 districts of 6 Northern provinces (Luang Prabang, Sayaboury, Bokeo, Luang Namtha, Houaphan, and Vientiane Province).

Source: JICA

JCM- REDD+ Model Project in Luan Prabang province
through controlling slash and burn

Project location



✓ The target area, which covers about 30 thousand hectare, is part of Phonsay District Houay Khing Village

Objective of project

- This study aims to quantify GHG emission reduction by implementing a REDD+ Project in Phonxay District, Luan prabang province in Lao PDR

Area cover 30
thousand ha

140,000
tCO_{2e}/y



The activities of project

- The activities planned in the project In village cluster level, focuses on reducing the slash and burn farming by introducing alternative livelihood such as paddy farming sloping agriculture and livestock raising,
- In provincial level, project focuses on establishing the implementation structure.



Project Participants

Japanese

- Waseda University,
- Mitsubishi UFJ Research consulting Co.,Ltd (MURC),
- Marubeni Corporation
- Japan Forest Technology Association (JAFTA)
- Waseda University Academic Solutions Corporation (WAS)

Lao PDR

- National Agriculture and Forestry Research Institute (NAFRI),
MAF

Current status

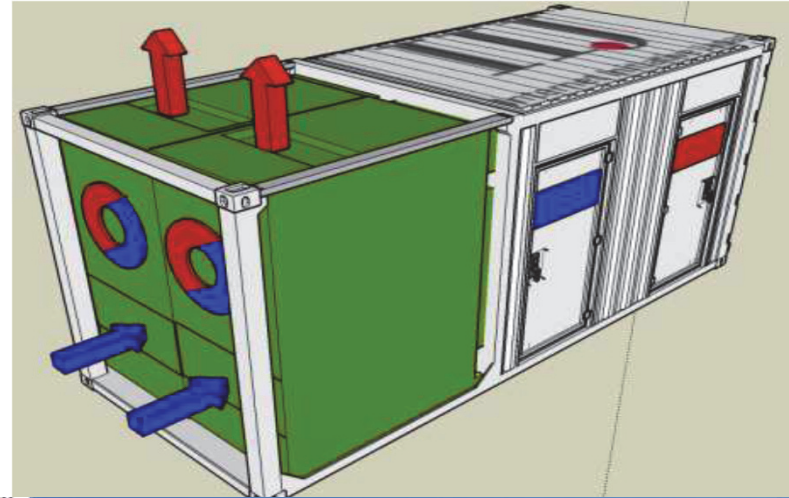
1. Building institutional framework
 - ✓ Continued to strengthen capacity of project participants to perform the planned REDD+ activities,
 - ✓ Shared Information with Luan Prabang Province regarding progress of JCM-REDD+ project and exchanged opinion regarding coordination with PRAP,
 - ✓ Preparation for performance-base payment to residents concerned.

2. Capacity building and awareness program for project stakeholders
 - ✓ Continued to conduct knowledge transfer activities to introduce alternative livelihood, including the improvement of livestock management, rice production and tradable crops.

3. Monitoring and others
 - ✓ Continuous introduction and improvement of transparency in reporting system of the REDD+ activities,
 - ✓ Discussed with Forest Dept. regarding issuance of official letter on implementation of JCM-REDD+ project.

(Source: Koichi Yamamoto, GEC)

JCM Demonstration Project: “Lao Energy Efficient Datacenter Project (LEED)”



Background (LEED)

- ❖ In 2014 the Ministry of Science and Technology, Lao P.D.R and NEDO jointly feasibility study for Energy Efficiency Data center,
- ❖ Project location at Dontew Village, Xaythany District, Road No. 10
- ❖ The Project receives financial support from the government of Japan.
- ❖ The project has been selected as one of the JCM demonstration projects by the New Energy and Industrial Technology Development Organization (NEDO),
- ❖ Starting date of project operation 1/2/2017
- ❖ Expected operational lifetime of project 4 year
- ❖ project are estimated to be 1,017 ton annually.

Objective of Project

- ❖ Energy saving and Low environmental Impact
- ❖ LEED aim to demonstrate effectiveness of Japanese high energy efficiency technology in developing countries
- ❖ To achieves higher energy efficiency by utilizing indirect-outside-air-cooling system which ventilate the inside heat using the outside air.
- ❖ project aims to reduce CO₂ emissions in Lao PDR by introducing energy-efficient container based data center to fulfill increasing needs for data center

Project Participants

Japanese

- ❖ Toyota Tsusho Corporation
- ❖ Internet Initiative Japan Inc
- ❖ Mitsubishi UFJ Morgan Stanley Securities Co., Ltd.

Lao PDR

- ❖ Ministry of Science and Technology, Lao PDR

Consultation for Methodology

Organize Local stakeholder Consultation workshop to Propose Methodology for Lao Energy Efficient Datacenter Project (LEED) for the JCM Project , 18 Aug 2016



Proposed Methodology

LEED Project: Lao Energy Efficient Datacenter Proposed methodology during 2nd Joint Committee Meeting on 14 Oct 2016 for consideration approved



Opening Ceremony for Lao Energy Efficient Datacenter (LEED), 29th November 2016 by Minister of Science and Technology



LEED Methodology: Call for Public Inputs

JCM



Laos - Japan

[Home](#) | [FAQ](#) | [Top](#)

■ About The Mechanism

■ Joint Committee

- JC Members
- JC Decision

■ Rules and Guidelines

■ Third Party Entity

■ Methodologies

- Proposed methodologies
- Approved methodologies
- Methodologies under put on hold

■ Project Cycle Search

- Project Cycle Search
- Request for registration
- Registered project
- Issuance of credits
- Request for post-registration changes

■ Contact us

■ Link

■ Annual transactions

About the Mechanism

Basic Concept of the Joint Crediting Mechanism (JCM) [more »](#)

News

- 27 Dec 16 [Call for public inputs on a proposed JCM project \(Laos\) "Lao PDR Energy Efficient Datacenter Project \(LEED\)" \(27 December 2016 to 25 January 2017\)](#)
- 14 Oct 16 [2nd Joint Committee in Vientiane](#)
- 04 Aug 16 [Call for public inputs on a JCM proposed methodology "Installation and operation of energy-efficient data center \(DC\) in the Lao PDR" \(4 August to 18 August 2016\)](#)
- 07 Jul 16 [Electronic Decision by the JC](#)
- 06 Mar 16 [Electronic Decision by the JC](#)
- 22 Apr 15 [Electronic Decision by the JC](#)
- 16 May 14 [Signing and adoption of the "Rules of Implementation for the Joint Crediting Mechanism" and the "Joint Crediting Mechanism Rules of Procedures for the Joint Committee" & 1st Joint Committee in Vientiane](#)
- 07 Aug 13 [Japan and the Lao People's Democratic Republic signed the bilateral document to start JCM](#)

[more »](#)

Thank you!

Immala Inthaboualy

Director of GHG Inventory and Mitigation Division

Disaster Management and Climate Change Dept., MONRE

Tel: 021 255932

<http://www.dndmcc.monre.gov.la>

