

Workshop on COP 27 Article 6 update and its implication  
on JCM implementation

# Implementing the JCM as Article 6.2 cooperative approach

December 23, 2022

Global Environment Dept.

Joint Committee secretariat for the JCM between Mongolia and Japan

# 1. Revisions to the JCM rules and guidelines

## ■ JCM rules and guidelines were revised to reflect decisions made at COP

### Revised rules and guidelines

- Rules of Implementation
- Project Cycle Procedure
- Methodology Guidelines
- PDD Guidelines
- Rules of Procedures for JC, etc

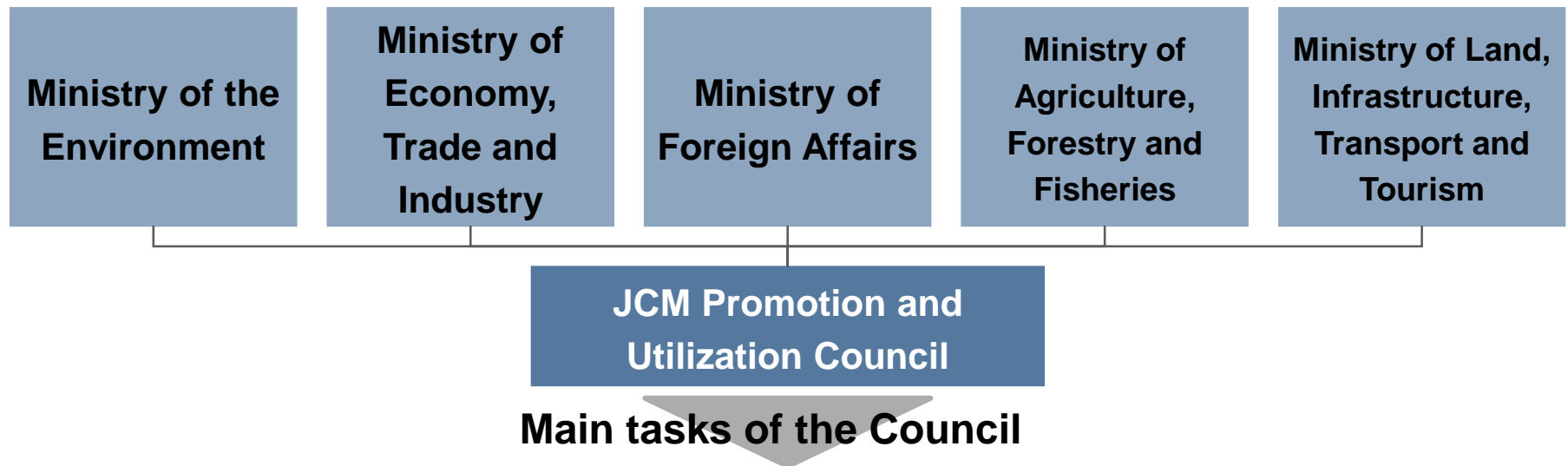
### Main changes

- **Authorization of JCM**
  - Use for NDC, other international mitigation purposes
- **Avoidance of double counting**
  - double counting is avoided by corresponding adjustments
- **Assessment of ref. emissions**
  - Validity is checked regularly
- **Crediting period**
  - 5 yrs (renewal x 2) / 10 yrs fixed

## 2. Institutional arrangements in Japan for Art. 6

### ■ Establishment of the JCM Promotion and Utilization Council (Jan. 2022)

- Based on the Plan for Global Warming Countermeasures (approved by the Cabinet on October 22, 2021)
- The Council consists of 5 ministries



- Authorization of JCM credits
- Corresponding adjustments
- Revision of the Guidelines for the Implementation of the JCM

# 3. Procedures for authorization by Japan

- The Procedures were put on public comment process from Feb. to Mar. of 2022 → Adopted in Apr. 2022
- The Procedures stipulate the following:
  - The Council is the entity giving authorization
  - Authorization is given to
    - JCM credits
    - JCM projects
    - Legal entities acquiring those JCM credits, etc
  - Information on authorization is made publicly available
    - Information on authorization is made available on the JCM website @ [www.jcm.go.jp](http://www.jcm.go.jp)

## 4. Procedures for corresponding adjustments

- The Procedures were put on public comment at the same time as the Procedures for authorization
- The Procedures stipulate the following:
  - Application of indicative corresponding adjustments (CAs) for each year from **2021 to 2029**
  - Application of indicative corresponding adjustments for the target year of **2030**